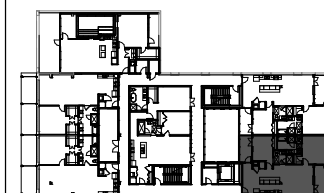


THE RESIDENCES
AT 917 CONTI

SINCE 1973
B
BROADMOOR, L.L.C.

UNIT 203

BED	2
BATH	2
LIVING AREA	1204.43 sf
PATIO AREA	247.21 sf
TOTAL AREA	1451.64 sf



2ND FLOOR PLAN

THESE DRAWINGS ARE FOR PRESENTATIONAL USE ONLY AND SQUARE FOOTAGE AND MEASUREMENTS ARE APPROXIMATE. FURNITURE NOT INCLUDED. ALL PLANS AND PRICING ARE SUBJECT TO REVISIONS BY 917 CONTI LLC, AS DECLARANT OR AS REQUIRED BY LAW. THE INFORMATION CONTAINED IN THIS DOCUMENT IS PROPRIETARY TO DECLARANT. THE DOCUMENT MAY NOT BE DISCLOSED, DUPLICATED OR USED FOR ANY PURPOSE IN WHOLE OR PART WITHOUT THE EXPRESS CONSENT OF DECLARANT.